



Advocates for Children's

Independent

Guide to NYC
Public Schools'

Reorganization— 2004

What's New and Who's Who

September 2003 brings huge changes to New York City's public schools new opportunities for parents. If your head is spinning with all the changes, you are not alone and communities a basic road map to the new system.

The Big Picture:

Although the changes seem never ending, most fall into to three themes in the Chancellor's Children First initiative.

- **Consolidating the Districts:** Perhaps the biggest change is the massive shift from 40 districts – 32 community school districts, 6 high school districts and 2 city-wide districts - to **10 education divisions**. There are no longer high school superintendencies or separate districts for failing schools – now all schools fall under 10 geographical divisions, which oversee almost all aspects of education. District 75, which provides programs for the city's most disabled students, is the exception to the rule and remains fully intact. The 32 old community school districts still exist—and are on the map—but have limited functions. **Six operational regions** have also been created to oversee many of the administrative nuts and bolts of schools, such as budgeting, transportation and school facilities. The operational regions divide up oversight over the 10 divisions.
- **Parent Involvement:** Each school now has a **Parent Coordinator** to support parent involvement and help individual parents. Each division also comes equipped with **Parent Support Teams** housed at the divisions' 13 new **Learning Support Centers**, which are designed to give parents better access to the help they need.

With new administrative offices, new job descriptions and—possibly—advocates for Children has created this guide for you—to give parents

- **Focus on Instruction:** The Chancellor has charged the ten new **Regional Superintendents** to focus on improving instruction and has hired an army of new employees to help them do exactly that, including 100 **Local Instruction Supervisors** and a math and reading coach for every school. Most schools will also be following a new “uniform curricula” for reading and math in the elementary and middle school grades.

Other Changes:

- **English Language Learners:** Reforms for English Language Learners – over 15% of students - have been put in place to improve instruction, including the hiring of 107 ELL Instructional Support Specialists.
- **Special Education:** The Department has new plans for the Special Education system. See page 8 for the Department’s diagram of those changes.
- **School Governance:** The Community School Boards, which once governed district schools, are now gone, replaced by the mostly advisory **Community District Education Councils**.

What's New and Who's Who –

At a Glance	
At the School	<ul style="list-style-type: none"> • Parent Coordinators • Math and Reading Coaches
At the District	<ul style="list-style-type: none"> • Changes for District Superintendent • Parent Support Officer • Community District Education Councils
At the Regions or Divisions	<ul style="list-style-type: none"> • 10 Instruction Divisions or Regions • Regional Superintendents, Local Instruction Superintendents and Instructional Support Specialists • 13 Learning Support Centers • Six Regional Operations Centers
Special Populations	<ul style="list-style-type: none"> • 107 Instructional Support Specialists for English Language Learners • Changes in the Special Education hierarchy

At the school...



Parent Coordinator

The new parent coordinator in your child's school is responsible for helping address parent concerns and supporting parent involvement in the schools. The parent coordinators report to the principals and to the Parent Support Team in the Learning Support Centers.



Math and Reading Coaches

Most schools have a reading coach and a math coach to train



= Key Person to Know

teachers on the best ways to teach reading and math and provide support to the teachers when they need it.

At the district...

Superintendent and District Office

In theory, the district superintendent still has the same duties he used to, such as hiring and evaluating principals; hiring, promoting, and dismissing all school employees; approving and modifying the school budget; and making decisions on matters relating to the instruction of students. However, because each superintendent now has a staff of two, it's not likely he will be able to perform these responsibilities in the way she did before. According to the chancellor's new plan, the "division superintendent" have the authority to oversee all instructional matters. Each district superintendent doubles as a local instructional supervisor.

Parent Support Officer
Each district will have one
Parent Support Officer to
assist parents in the district.
This person hopefully will be

What's New and Who's Who –

At the 10 Instructional Divisions or Regions...

Learning Support Centers

Each division has at least one Learning Support Center – which houses the regional superintendent, student support staff and a team of “parent support officers.” The staff members in the parent support office are charged with helping parents with any school-related questions.

Regional Superintendent



Each regional superintendent is responsible for putting the new curriculum in effect, providing support to teachers and overseeing all aspects of instruction in their region. The regional superintendents each oversee ten local instructional supervisors.

Local Instructional Supervisors

Each division has ten local instructional supervisors (LIS) who each oversee instruction in twelve or so schools. They support the principals in each of their assigned schools and evaluate how well each principal is doing his job. 32 LIS's double as district superintendents (see page 5). The local instruction supervisors can be found in the learning support centers.

Instructional Support Specialists

The instructional support specialists are being hired to train classroom teachers on methods to teach English Language Learners, struggling students, and students with disabilities and consult with teachers needing assistance with individual children. There are two instructional support specialists assigned to each local instructional supervisor.





= Key Person to Know

Parent Support Coordinator Team Leader

This person supervises the parent support staff at each regional learning support center. If you cannot get the answers you need from the regular staff, this is the person to talk to.

Regional Director of Student Placement, Youth and Family Support Services:

This (hopefully energetic) person oversees almost every aspect of the schools outside of instruction, including: school safety, School Leadership Teams, community outreach, attendance, student discipline and hearings, 504 issues, guidance, health and substance abuse, NCLB appeals, zoning and student placement.

... and the 6 Regional Operation Centers

Regional Operation Centers (ROCs)

The new operation centers and their directors are charged with handling much of the back-end work of the schools – from overseeing school budgets, to providing food, custodial and transportation services. There are six of these centers, which are housed in the learning support centers. Each of the 10 divisions also has a Regional Operations Deputy Director to act as liaison to the operation centers.

Special Populations

For English Language Learners

English Language Learner Instructional Support Special work with approximately six schools. They are there to support ELLs.

Special Education

The Department of Education has planned changes within the Special Education system. This diagram is a verbatim reproduction of a diagram produced by the Department of Education.

NEW SPECIAL EDUCATION

5 Regional Administrators of Special Education (1 Serves as Lead)

3 Supervisors of Speech

- Guarantor of Special Education Service Delivery
- LRE Plans
- Oversight of Referral/Decertification
- Instructional Outcomes

Principals

Parent Coordinator

Instructional Support Center (Psychologist, School Social Workers, Special Education Teachers, Clerical Support)

- Pre-referral Intervention
- Special Education

There are 107 new ELL Instructional Support Specialists who each work in ELL classrooms and to report on the quality of education for

STRUCTURE IN LEARNING DIVISION

Superintendent

Committees on Special Education



- Non-Public School Assessments
- Hearing Handicapped/Visually Impaired Assessments
- Placement and Securing Related Services
- Impartial Hearings
- Pre-School Assessments
- Oversight

Local Instructional Supervisors

20 Instructional Support Specialists (1 per six schools)



- Professional Development on research-based Instructional strategies (Orton-Gillingham)
- Adapting/Modifying Curriculum
- Collaborative Consultation Skills
- Differentiated Instructions

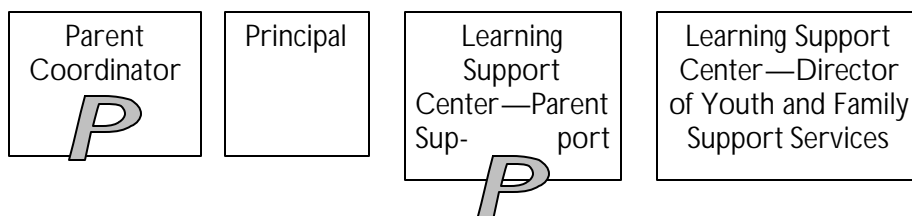


ions

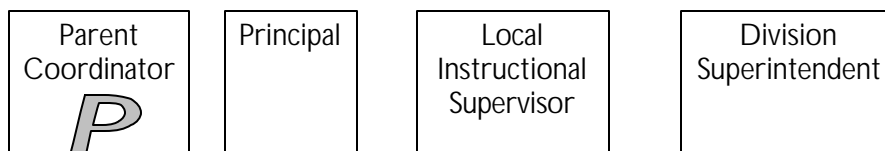
Who's there to help in the schools and divisions

When problems arise, there are a number of people who are charged with helping parents or overseeing the schools. Depending upon whether the problem concerns an individual child's needs, instruction in the school or problems with school operations, there are different people who should help you out. Below are lists of people who, according to DOE documents, are responsible for handling different problems in the schools.

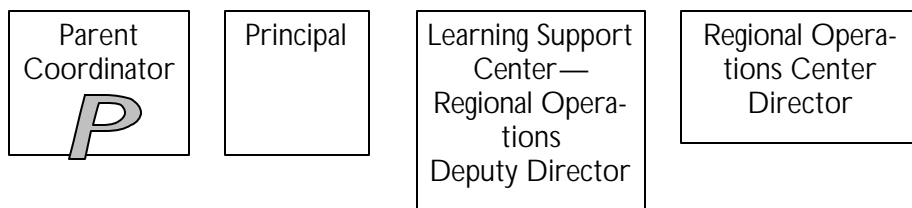
Student Needs—General Education



Instruction—General Education



Operations—Facilities, supplies, transportation



P = Staff Specifically Charged with Helping Parents

The Top Folk at Central

The Chancellor also has deputies in charge of overseeing all aspects of the schools.

The Office of Teaching and Learning
Deputy Chancellor Diana Lam
212 374-5115.

Office of Parent and Community Engagement
Senior Counselor Michele Cahill
212-374-5159.

Office of Youth Development and School-Community Services
Senior Executive Lester Young
212-374-0266

School Safety and Planning
Chief Executive Benjamin B. Tucker
212 374-3400

Office of School Facilities
Acting Chief Executive James Lonergan
718 391-6555

Where to Find Everyone

Learning Support Centers: Where you'll also find Division Superintendents, Local Instructional Superintendents, Parent Support Teams and Directors of Student Support Services.

Region	Superintendent	Districts	Learning Support Center	Telephone #
1	Irma Zardoya	9, 10	1 Fordham Plaza, Bronx, 10458	718 741-7090
2	Laura Rodriguez	8, 11, 12	1230 Zerega Avenue, Bronx, 10462	718 828-2440
3	Judith Chin	25, 26	30-48 Linden Place, Flushing, 11354	718 281-7575
		28, 29	90-27 Sutphin Blvd., Jamaica, 11434	718 557-2600
4	Reyes Irizarry	24, 30, 32	28-11 Queens Plaza North LIC, 11101	718 391-8300
5	Kathleen Cashin	19, 23, 27	82-01 Rockaway Blvd. Ozone Park, 11416	718 642-5800
			1655 St. Mark's Ave. Brooklyn, 11233	718 922-4960
6	Gloria Buckery	17, 18, 22	5619 Flatlands Avenue Brooklyn, 11234	718 968-6100
7	Michelle Fratti	20, 21, 31	715 Ocean Terrace Staten Island, 10301 415 89 th Street, Brooklyn, 11209	718 556-8350 718 759-4900
8	Carmen Farina	13, 14, 15, 16	131 Livingston Street Brooklyn, 11201	718 935-3900
9	Peter Heaney	1, 2, 4, 7	333 7 th Avenue, 28 th Street Manhattan, 10001	212 356-7500
10	Lucille Swarns	3, 5, 6	4360 Broadway Manhattan, 10033	917 521-3700

For a full listing of the **Local Instructional Supervisors**, see the DOE's website www.nycenet.edu.

Committees on Special Education – Offices and Chairpersons

Region	Chairperson	Districts	Address	Telephone #
1	Sileni Nazario	9 10	5500 Broadway, 2 nd Fl. Bronx, 10463 1887-95 Bathgate Ave Bronx, 10457	718 584-8002 718 731-2590
2	Michelle Beatty	8, 11, 12	3450 E. Tremont Ave. 2 nd Fl. Bronx, 10465	718 794-7460 718 794-7420
3	Maura Hersch	25, 26 28, 29	30-48 Linden Place Flushing, 11354 90-27 Sutphin Blvd. Jamaica, 11434	718 281-3520 718 281-3460 718 557-2500
4	Gail Kastenholz	24, 30, 32	28-11 Queens Plaza North LIC, 11101	718 391-8410 718 391-8400
5	Sherri Shulman	19, 23, 27	82-01 Rockaway Blvd. Ozone Park, 11416	718 642-5836 718 642-5890
6	Cheryle Knobel	17, 18, 22	5619 Flatlands Avenue, Brooklyn, 11234 1780 Ocean Avenue Brooklyn, 11230	718 968-6266 718 968-6200 718 758-7600
7	Claire Donnellan	31 20, 21	715 Ocean Terrace, Bldg. A Staten Island, 10301 415 89th Street Brooklyn, 11209	718 420-5754 718 420-5700 718 759-4950
8	Arthur Sadoff	13, 14, 15, 16	131 Livingston Street Brooklyn, 11201 335 Adams Street, 5th Floor Brooklyn, 11201	718 384-4322 718 384-7600
9	Lorraine Masten	1, 2, 4, 7	333 7th Ave, 4th Floor New York, 10001	917 339-1575 917 339-1600
10	Carole Kraus	3, 5, 6	2120 Amsterdam Ave New York, 10023	212 795-4656

Regional Administrators of Special Education

Re- gion	Name	Districts	Address	Telephone #
1	Ellen Newman	9, 10	1 Fordham Plaza Bronx, 10458	718 741-2743
2	Bernice Moro- Reyes	8, 11, 12	1230 Zerega Avenue Bronx, 10462	718 828-3602
3	Leonard Sterman	25, 26, 28, 29	30-48 Linden Place, Rm. 303 Flushing, 11354	718 281-7506
4	Nancy Needle	24, 30, 32	28-11 Queens Plaza North LIC, 11101	718 391-8401
5	Francis LoFaso	19, 23, 27	82-01 Rockaway Blvd. Ozone Park, 11416	718 642-5753
6	Michael Gersch	17, 18, 22	5619 Flatlands Avenue Brooklyn, 11234	718 968-6106
7	Rob J., Rosenberg	20, 21, 31	715 Ocean Terrace, Bldg. A Staten Island, 10301	718 420-5706
8	Steve Rosen	13, 14, 15, 16	131 Livingston Street, Rm. 411 Brooklyn, 11201	718 935-3959
9	Sarita Rein	1, 2, 4, 7	22 East 28 th Street, 7 th Floor New York, 10016	917 256-4639
10	John Mulligan	3, 5, 6	4360 Broadway New York, 10033	917 521-3711

Regional Operations Center Directors

Regional Operation Center Director	Divisions Covered...	Address	Telephone #
Vincent Clark	1 and 2	1 Fordham Plaza, Bronx, 10458	718 741-7070
Marlene Siegel	3	30-48 Linden Place, Flushing, 11354	718 281-7650
Sandy Brawer	4 and 5	28-11 Queens Plaza N, LIC 11101	718 391-8222
Espi Semetis	6 and 7	715 Ocean Ter- race, Staten Island, 10301	718 556-8300
Donna Rey	8	131 Livingston Street, Brooklyn, 11201	718 935-3400
Jerry Schondorf	9 and 10	333 7 th Avenue, Manhattan, 10001	212 356-3700



Still have more questions? Call Advocates for Children during our helpline hours from 10-1 Tuesday or Thursday at 212 947-9779, or sign up for our e-mail updates by logging on to www.insideschools.org.

Advocates for Children of New York, Inc.

151 West 30th Street, 5th Floor

New York, New York 10001

(212) 947-9779